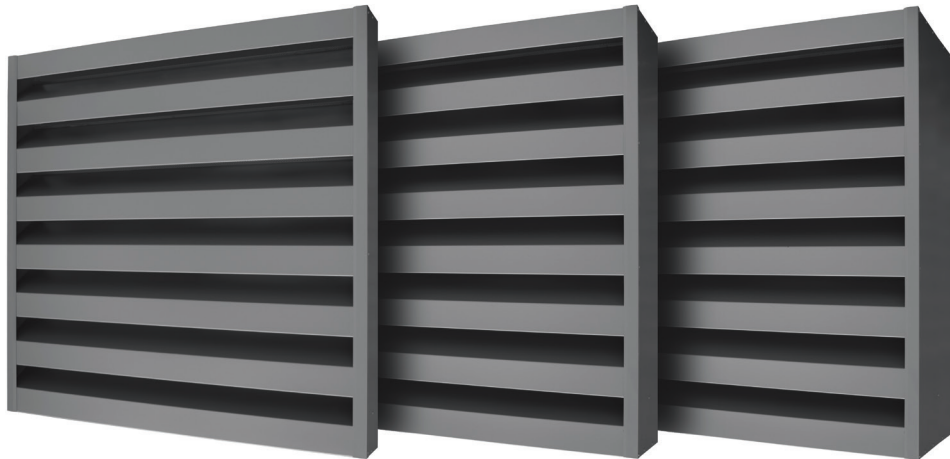


AVS Acoustic Louvre Range

Product Data Sheet



General Description

The AVS range are fabricated acoustic louvres available in panel format designed for commercial projects.

Technical Details

Materials

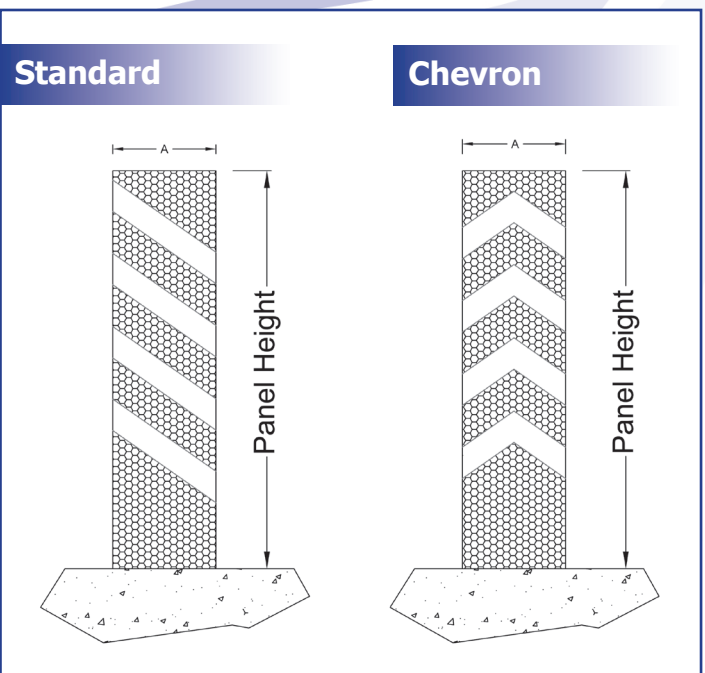
- Frame and blades-1.5mm galvanised sheet
- Acoustic medium-tissue faced 45kg/m² Non toxic mineral wool (packed to +10% compression to eliminate voids)
- Perforated galvanised sheet to rear of blades

SRL Test Date	Description in brief	R _w (C;C _{tr})
20/03/13	AVS 150 Standard	10 (0;-1)
26/09/12	AVS 275 Standard	14 (-1;-4)
20/03/13	AVS 300 Standard	17 (-1;-3)
20/03/13	AVS 300 Chevron	16 (-1;-4)
26/09/12	AVS 550 Chevron	21 (-2;-6)

Options

- Perimeter flashing's to suit application
- Metal or aluminium birdguard
- HDPE insect screen
- Blanking Plate as required
- Flanged or glazing outer frame

Dimension A	Louvre Type	Approx kgm ²
150 A	Standard	30
275 A	Standard	45
300 A	Standard	50
300 A	Chevron	50
550 A	Chevron	90

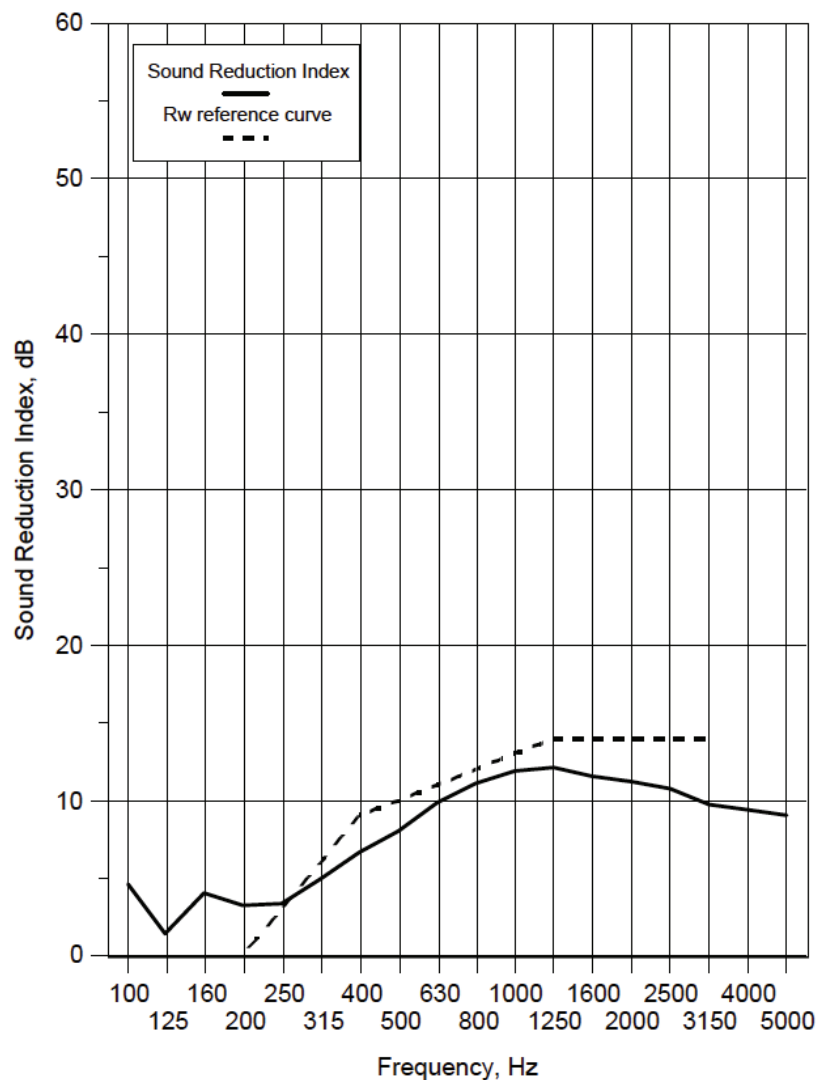


Louvre designs have been tested at the Sound Research Laboratory, Suffolk, to Determine the Airbourne Sound Transmission in accordance with BS EN ISO 10140-2:2010

AVS 150 SRL Test Report

Rw(C;Ctr)= 10 (0;-1) dB

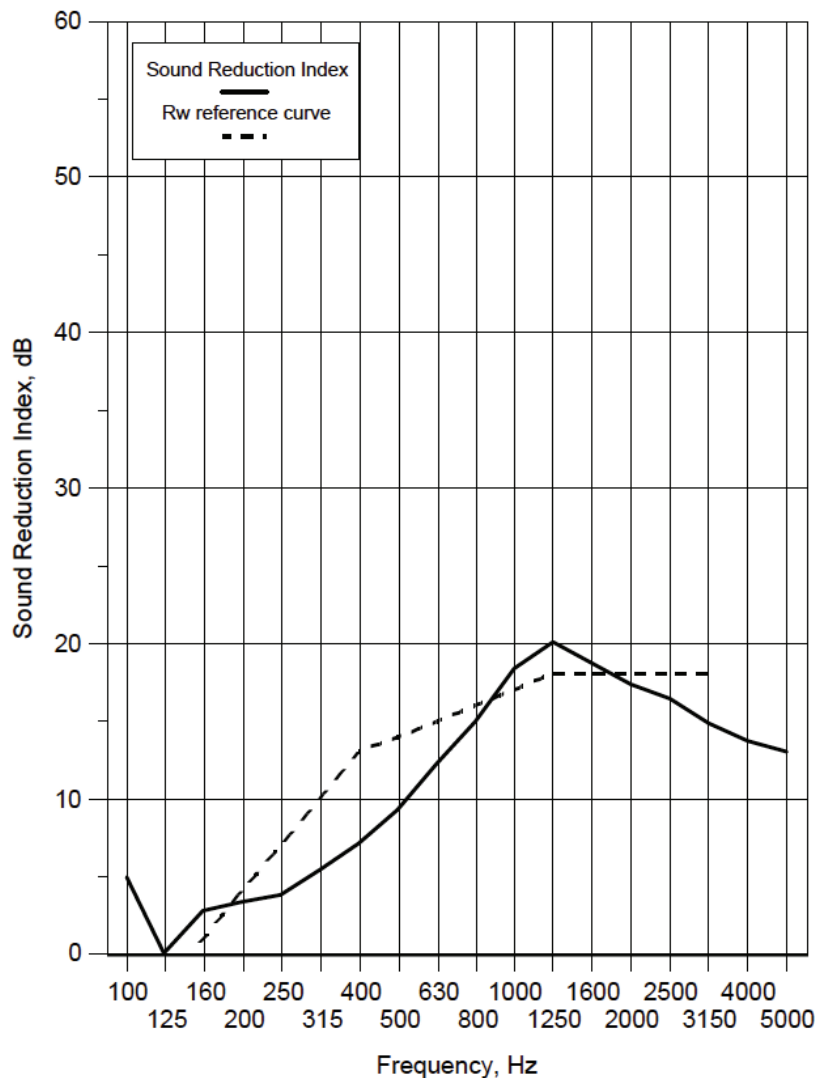
Freq f Hz	Sound Reduction Index, dB	
	1/3 Oct	1/1 Oct
50+	7.3	6.1
63+	9.3	
80+	3.7	
100	4.6	3.1
125	1.4	
160	4.0	3.8
200	3.2	
250	3.4	
315	5.0	8.0
400	6.7	
500	8.0	
630	9.8	11.7
800	11.1	
1000	11.9	
1250	12.1	11.2
1600	11.5	
2000	11.2	
2500	10.8	9.4
3150	9.7	
4000	9.4	
5000	9.1	9.4
6300+	9.7	
8000+	9.0	
10000+	9.6	
Average 100-3150	7.8	Version v2.0



AVS 275 SRL Test Report

Rw(C;Ctr)= 14 (0;-4) dB

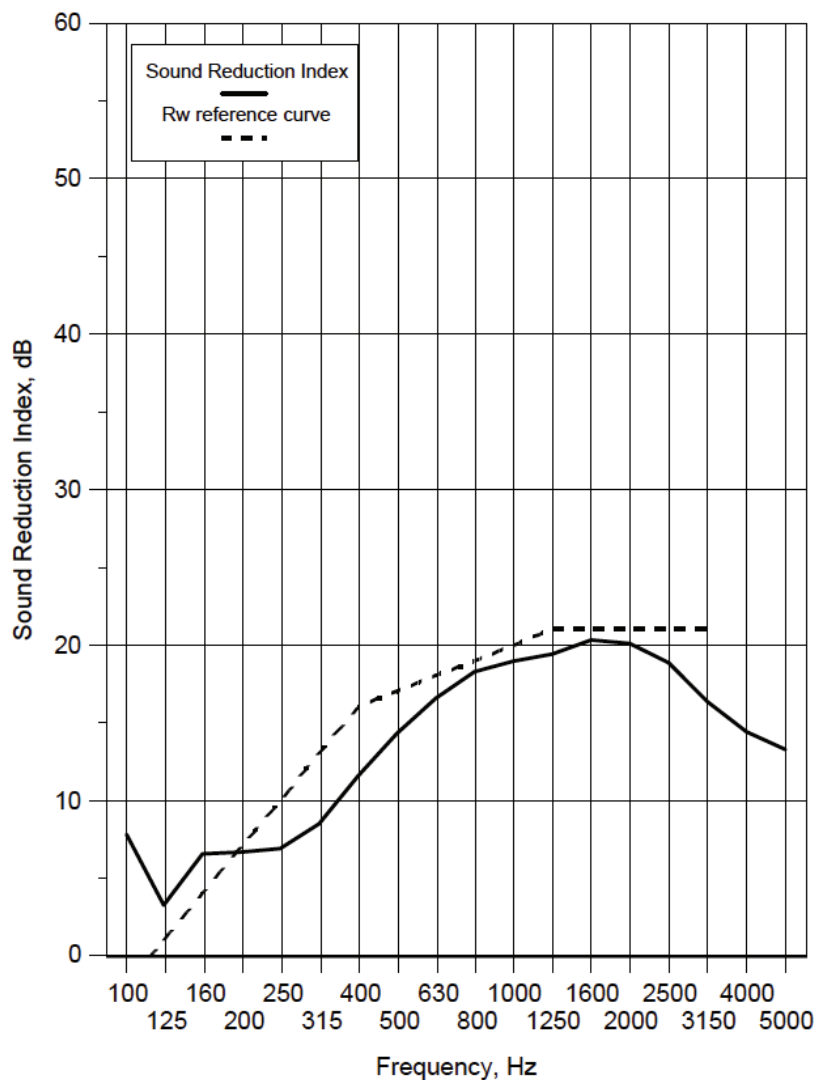
Freq f Hz	Sound Reduction Index, dB	
	1/3 Oct	1/1 Oct
50+	6.3	6.0
63+	6.9	
80+	5.0	
100	4.9	2.1
125	0.0	
160	2.8	4.1
200	3.4	
250	3.8	
315	5.4	9.1
400	7.1	
500	9.3	
630	12.2	
800	15.0	17.3
1000	18.4	
1250	20.1	
1600	18.7	17.4
2000	17.4	
2500	16.4	
3150	14.9	13.8
4000	13.7	
5000	13.0	
6300+	13.5	13.9
8000+	13.3	
10000+	15.2	
Average 100-3150	10.6	Version v2.0



AVS 300 SRL Test Report

Rw(C;Ctr)= 17 (1;-3) dB

Freq f Hz	Sound Reduction Index, dB	
	1/3 Oct	1/1 Oct
50+	10.3	8.0
63+	11.6	
80+	5.1	
100	7.8	5.5
125	3.3	
160	6.5	7.3
200	6.7	
250	6.9	
315	8.5	13.6
400	11.5	
500	14.3	
630	16.6	
800	18.3	18.9
1000	18.9	
1250	19.4	
1600	20.3	19.7
2000	20.1	
2500	18.8	
3150	16.3	14.5
4000	14.4	
5000	13.3	13.5
6300+	13.8	
8000+	13.0	
10000+	13.9	
Average 100-3150	13.4	Version v2.0



AVS Acoustic Louvre Range

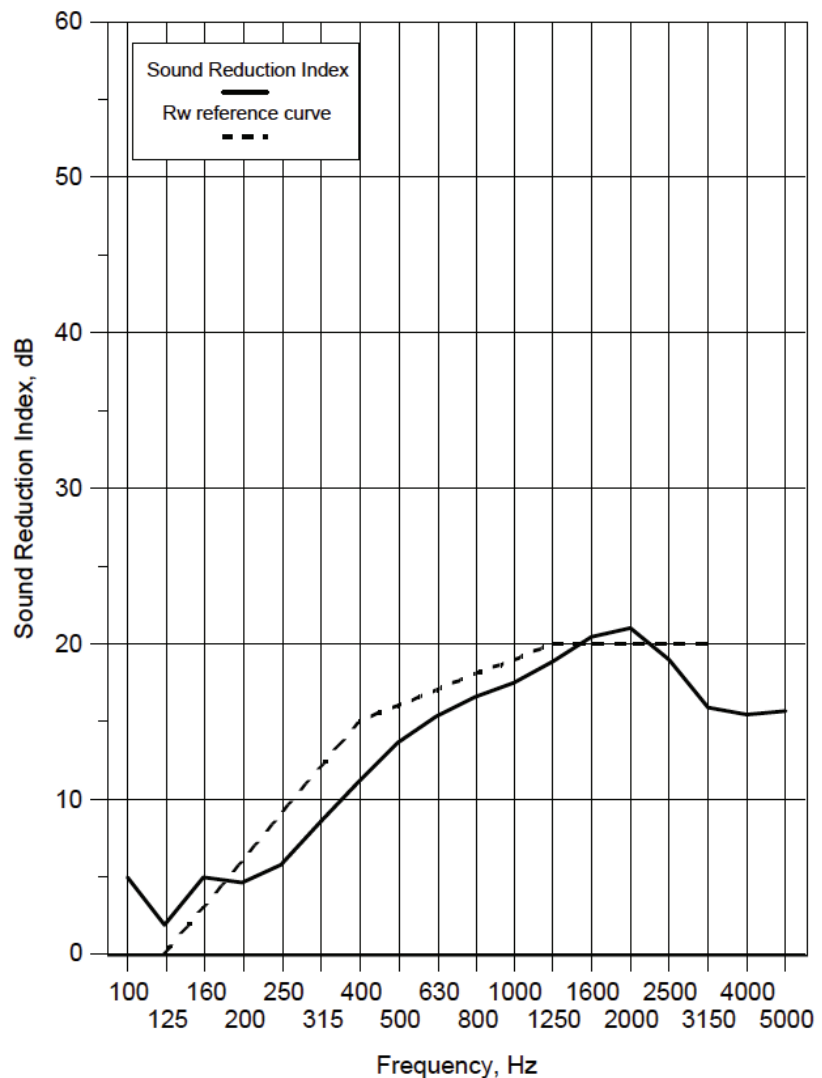
Product Data Sheet



AVS 300 Chevron SRL Test Report

Rw(C;Ctr)= 16 (1;-4) dB

Freq f Hz	Sound Reduction Index, dB	
	1/3 Oct	1/1 Oct
50+	9.4	5.7
63+	10.2	
80+	2.2	
100	4.9	3.7
125	1.9	
160	5.0	6.0
200	4.6	
250	5.8	
315	8.5	13.0
400	11.1	
500	13.6	
630	15.3	
800	16.6	17.5
1000	17.5	
1250	18.8	
1600	20.4	20.0
2000	21.0	
2500	18.9	
3150	15.9	15.7
4000	15.4	
5000	15.7	
6300+	16.8	16.6
8000+	16.0	
10000+	17.2	
Average 100-3150	12.5	Version v2.0



AVS 550 SRL Test Report

Rw(C;Ctr)= 21 (2;-6) dB

Freq f Hz	Sound Reduction Index, dB	
	1/3 Oct	1/1 Oct
50+	6.1	5.4
63+	6.9	
80+	3.8	
100	4.3	3.9
125	2.3	
160	5.7	
200	8.3	9.1
250	8.6	
315	10.7	
400	14.8	17.9
500	19.2	
630	24.6	
800	22.7	23.6
1000	22.2	
1250	28.2	
1600	27.0	25.2
2000	24.6	
2500	24.5	
3150	23.9	22.5
4000	22.4	
5000	21.6	
6300+	22.7	23.0
8000+	22.7	
10000+	23.8	
Average 100-3150	17.0	Version v2.0

